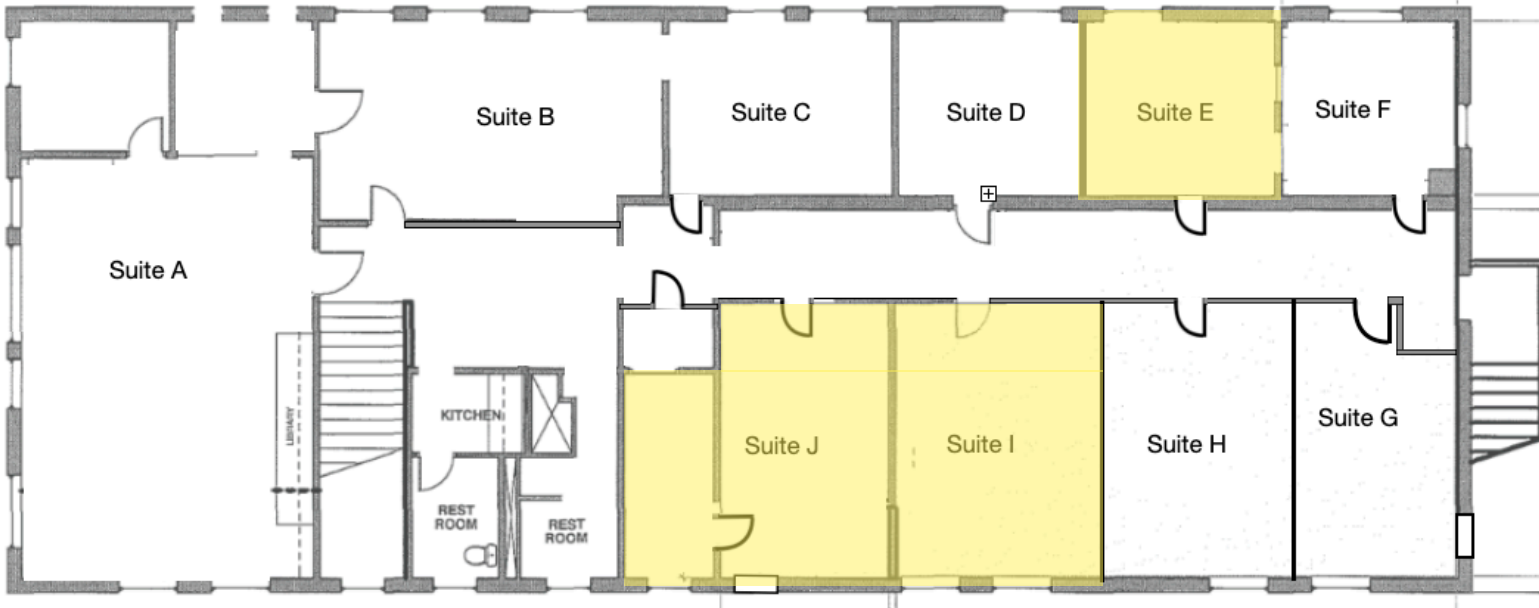


888 LINDEN AVENUE, SUITE F  
CARPINTERIA, CA 93013  
SECOND FLOOR



**AVAILABLE OFFICES:**

**SUITE E**

SIZE: 243 RENTABLE SQ. FT.  
BASE RENT: \$895/ MONTH  
NNN'S: \$1.20 PER SQ. FT. (\$291.60) / MONTH

**SUITE I**

SQ. FT.: 351 RENTABLE SQ. FT.  
BASE RENT: \$1,053 / MONTH  
NNN'S: \$1.20 PER SQ. FT. (\$421.20) /MONTH

**SUITE J (TWO ROOM SUITE)**

SIZE: 487 RENTABLE SQ. FT.  
BASE RENT: \$1,500 / MONTH  
NNN'S: \$1.20 PER SQ. FT. (\$584.40) / MONTH